



**SA100**  
*with MM300 function*

---

**Switchgear Analyser  
Breaker Testing**

# Switchgear Analyser

## Introduction

Weis is a specialist company with over 40 years of experience in the commissioning, testing & maintenance of switchgear and power network fault monitoring within the Power Utility Industry.

Based on its pioneering of analogue timing techniques developed over more than 20 years ago, Weis has applied its expertise to develop a robust switchgear test set for performance analysis on high, medium and low voltage circuit breakers.

The Switchgear Analyser (SA100) is an essential substation preventative maintenance tool and aid for power utilities with ever increasing demands for more reliable low cost energy and on-time maintenance.

Possible test results which can be computed per phase for each breaker operation include:

- Peak Coil Current
- Current Pulse Length
- Operate Times (Main / Resistive)
- Operate Time Spread (Main / Resistive)
- On Time and Dead Time
- Datum Velocity
- Velocity at Contact Touch
- Stroke
- Contact Length (Main / Resistive)
- Contact Separation
- Spring Compression on Vacuum Contacts
- Travel Overshoot
- Rebound
- Bounce Time
- Mechanism Times (Pre Latch / Latch Period)
- Acceleration
- Fingerprint Comparison on all channels (Grey Zone Checking)
- Battery Voltage



Dynamic Timing of up to 2 breaks per phase with optional inbuilt MM300 providing 6 x 50A constant current outputs.

Inbuilt option for Static or Dynamic Micro-Ohm Testing in 50A steps, 100A, 200A or 300A pure constant DC current.

1st Trip Profile Capture and Measurement using On-Line Test Method.

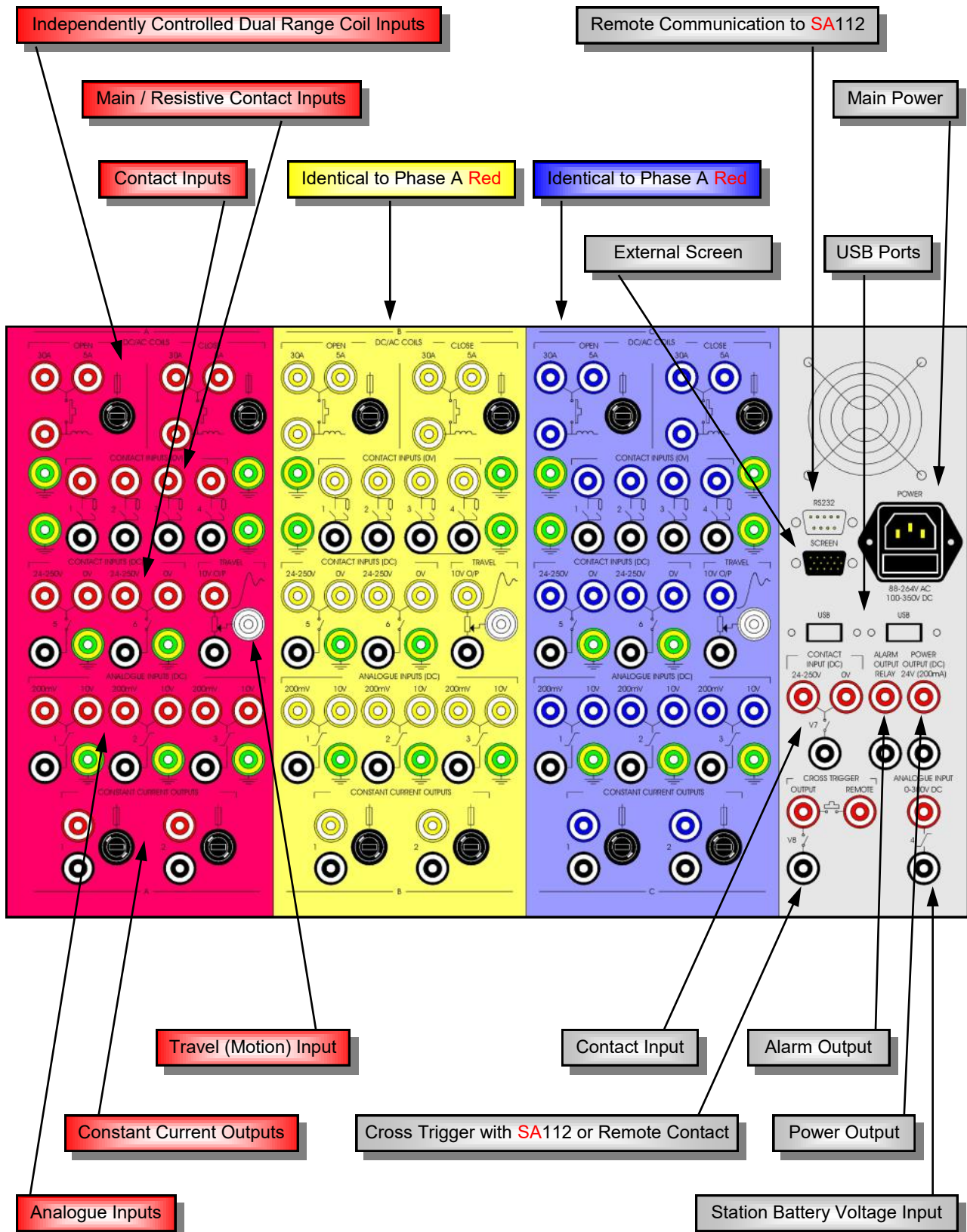
On-Line Measurements: 1st Trip, Coil Current, Contact Timing from CT Secondary's, Control Voltage, Auxiliary Contact Timing, Travel/Motion, Motor Currents

Timing of up to 12 main and 12 resistive contacts per phase when combined with the SA112 expansion unit.

## Features

- ◆ ROBUST SWITCHGEAR TEST AND ANALYSIS SYSTEM FOR PORTABLE OR FACTORY USE
- ◆ SOFTWARE **WIZARD** TO SIMPLIFY TEST CONFIGURATION
- ◆ COMPUTED RESULTS WITH CUSTOM REPORT FORMAT FEATURE, REDUCING TEST TIME
- ◆ CREATE A ELECTRONIC LIBRARY OF BREAKER TEST SETTINGS AND SIGNATURES
- ◆ REVISED CONFIGURATION / RECALCULATION ON PREVIOUS TESTS CAPABILITY
- ◆ SUBSTATION ENVIRONMENT PROVEN WITH A 12.1" **HIGH-BRIGHT SUNLIGHT READABLE** COLOUR TFT DISPLAY
- ◆ INDENPENDENT CONTROL OF TRIP AND CLOSE AC OR DC COILS PER PHASE WITH 5 OR 30AMP MEASUREMENTMENT RANGES
- ◆ 16 ANALOGUE INPUT FOR: 3 x *DUAL RANGE (5 / 30A) TRIP AND CLOSE COIL CURRENT* , 3 x *TRAVEL*, 1 x *STATION BATTERY VOLTAGE*, 9 x *USER CONFIGURABLE*
- ◆ 32 DIGITAL INPUTS FOR: *TIMING OF UP TO 4 MAIN AND 4 RESISTIVE CONTACTS PER PHASE*, 7 x *TIMING CONTACTS (24-250V DC or 0V DC)*
- ◆ 1st TRIP ON-LINE PROFILE CAPTURE AND MEASUREMENT
- ◆ CALCULATED INPUTS FOR: *VELOCITY AND ACCELERATION PER TRAVEL INPUT*
- ◆ MEASUREMENT OF UP TO 12 PARALLEL CONTACT (P.I.R.) SWITCHING RESISTORS IN A SINGLE TEST
- ◆ OPTIONAL PRINTER HOUSED IN CASE
- ◆ OPTIONAL **SA112** EXPANSION UNITS FOR TIMING OF UP TO 12 MAIN AND 12 RESISTIVE CONTACTS PER PHASE INCLUDING FRAME R BREAKERS
- ◆ OPTION TO DYNAMICALLY TEST 2 BREAKS PER PHASE WITH BOTH ENDS CONNECTED TO **EARTH**
- ◆ OPTION FOR MICRO-OHM TESTING - STATIC AND DYNAMIC DCM / DCRM

## Connections





# Switchgear Analyser

## Data Management

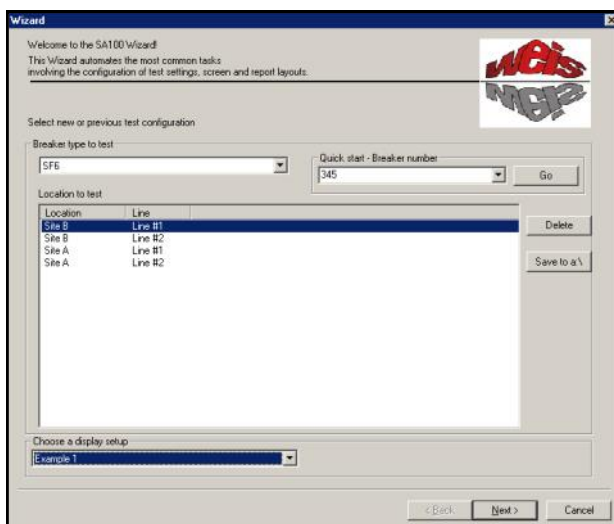
**B**reaker **T**est & **A**nalysis software is an essential 32-bit Windows™ database program that provides an easy to use operator interface for configuring & displaying the **SA100** test results in graphical and text report formats.

### Features:-

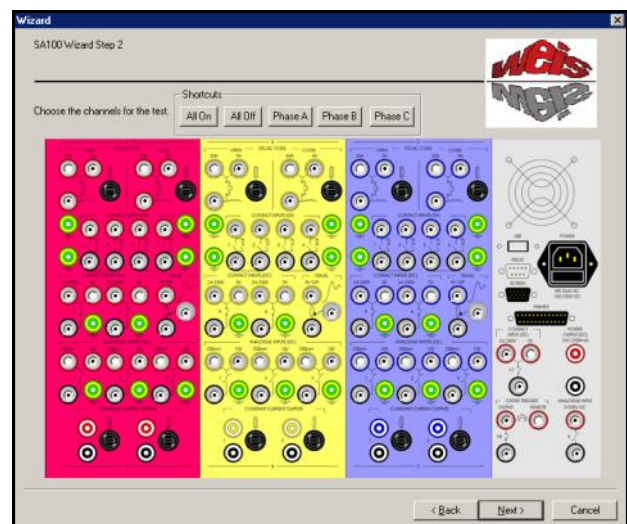
- ◆ Operator interface for Regular (via Wizard) or Advanced users
- ◆ Results automatically computed with feature to recalculate on configuration change of any existing test record
- ◆ Graphical display of captured waveforms with measurement cursors
- ◆ Standard or user defined report format
- ◆ Archiving of all tests and configurations
- ◆ Fingerprint comparison on all channels (grey zone checking)

**BTA** software runs on a standard IBM compatible PC with a 32-bit Windows™ operating system. This permits the transportation of test records to a regular office based or portable computer.

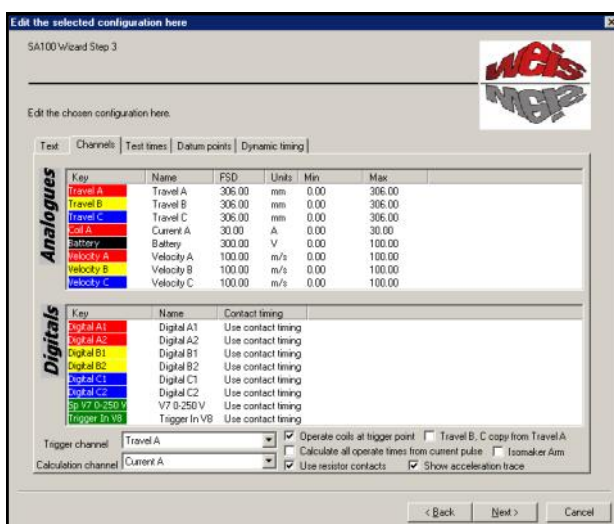
The display and printing of a report can be fully customised to include logo's, in-house styles, text phrases and results format, thus eliminated the need to manually complete a written form in most cases.



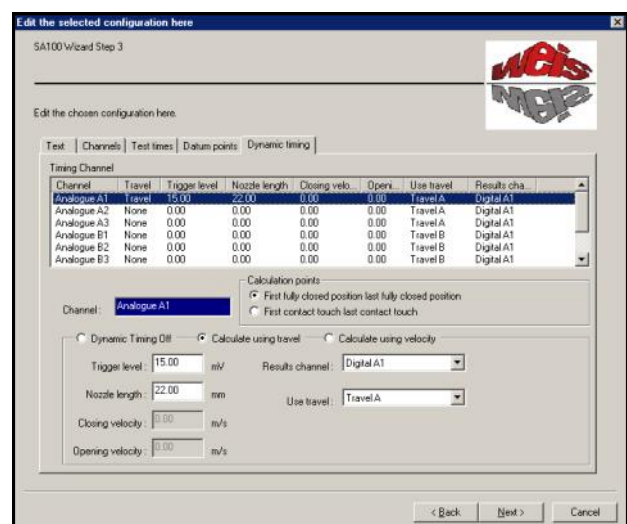
Wizard - Start New or Select Existing Test Configuration



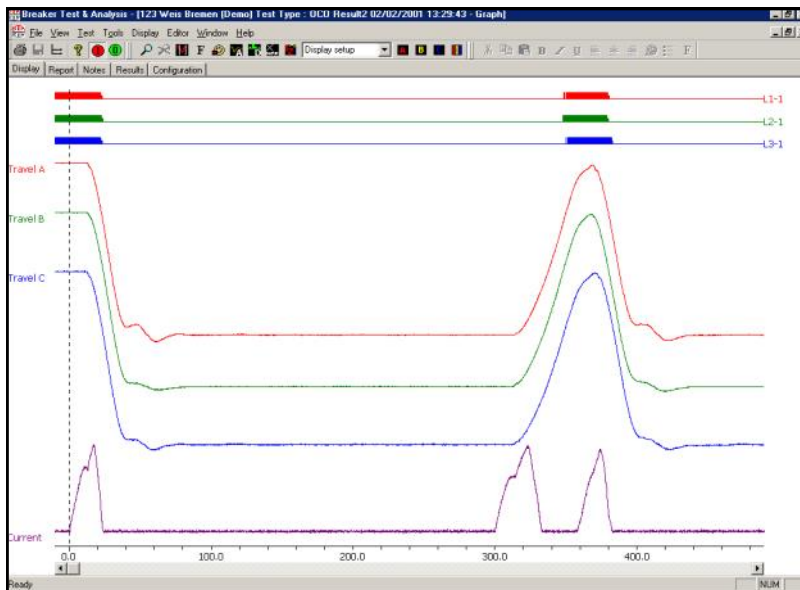
Wizard (Step 2) - Breaker Test Connections



Wizard (Step 3) - Channel Settings



Wizard (Step 3) - Dynamic Test Settings



## Graphical Display

Features:

Zoom - Time Base

Zoom - Amplitude

Cursors - Measured Value & Time

Colours - Traces & Background

Font - Text Style & Size

Print - Screen as Displayed

Add Calculated Channels

Combine Test Records - Overlay Traces

Select Pre-defined Display Setups

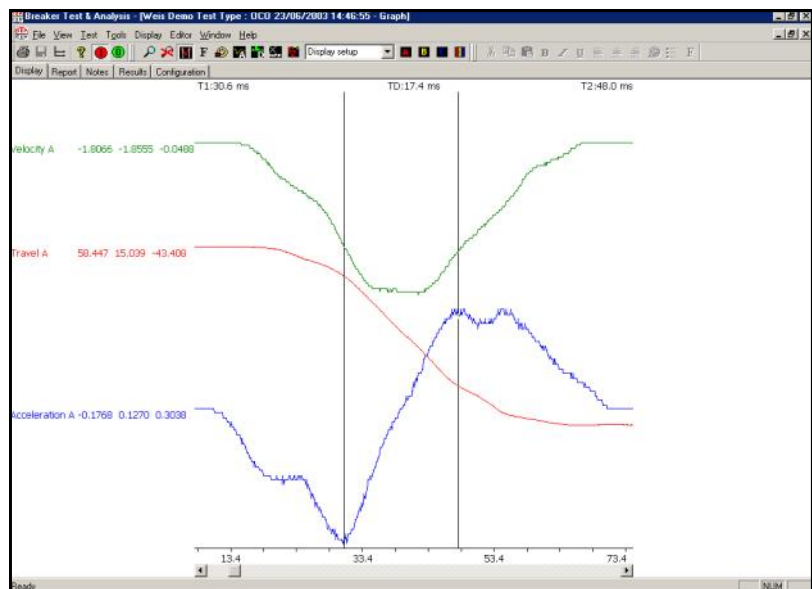
## Acceleration & Velocity

Advanced Analysis:

Acceleration Trace Computed from Travel

Velocity Trace computed from Travel

All Graphical View Features Supported



Breaker Test & Analysis - [123 Weis Bremen (Demo) Test Type : OCO Result2 02/02/2001 13:29:43 - Report]				
Site Name : Weis Bremen (Demo)				
Breaker Number: 123				
Breaker Type : 400kV SF6				
Line Name : Line #1				
Operator Name : B.Tester				
Test Type : OCO				
Test Date : 02/02/2001				
Test Time : 13:29:43				
Dead Time : 326.10 324.80 327.20 ms				
On Time : 31.70 31.60 32.90 ms				
Operation 1 Results				
Current	2.22	A		
	Phase A	Phase B	Phase C	
Operate Time	22.30	22.90	22.30	ms
Operate Time Spread	0.00	0.00	0.00	ms
Operate Time (res)	23.30	23.90	23.30	ms
Operate Time Spread (res)	0.00	0.00	0.00	ms
Contact Times #1	22.30	22.90	22.30	ms
Contact Times #1 (res)	23.30	23.90	23.30	ms
Overshoot Time	18.70	24.10	23.20	ms
Velocity	5.11	5.19	5.21	m/s
Velocity (2)	5.11	5.19	5.21	m/s
Terminal Velocity	1.22	0.38	0.69	m/s
Stroke	116.12	117.34	115.97	mm
Contact Length	33.57	34.64	34.79	mm
Contact Length (res)	38.76	39.98	40.44	mm
Contact Separation	82.55	82.70	81.18	mm
Contact Separation (res)	77.36	77.36	75.53	mm
Overshoot	4.73	1.98	3.81	mm
Rebound	0.76	0.46	0.46	mm

## Text Report

Features:

Customise which Results are shown

Edit Headings

Change Font - Text Style, Size & Colour

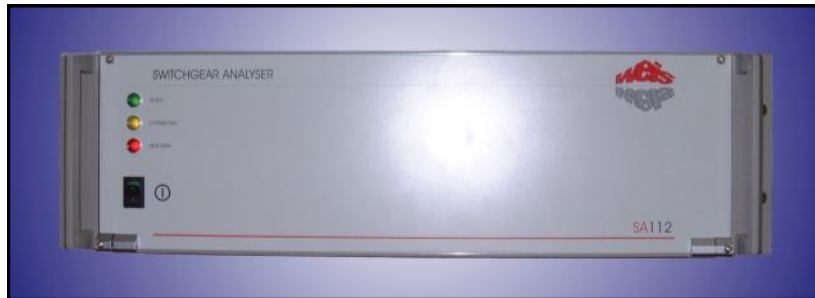
Select Pre-defined Report Setups

# Switchgear Analyser

## Feature & Accessories

### SA112 Expansion Unit

The SA112 extends the digital input capacity of a SA100 Switchgear Analyser for timing circuit breakers with up to 12 breaks per phase including Frame R breakers.



#### Features:-

- ◆ Most compact system
- ◆ Serial link and 2-wire cross-trigger cable from up to 2 SA112's to an SA100 Switchgear Analyser
- ◆ Timing of circuit breakers with up to 12 main and 12 resistive breaks per phase including Frame R types

### Dynamic Timing with Both Ends Connected to Earth

Dynamic Timing is performed with a constant current passed through the breakers contacts with both ends connected to earth, providing the most accurate timing test on modern circuit breakers.

This method of timing is possible on a SA100 Switchgear Analyser with the optional inbuilt MM300 feature. An optional Dynamic Timing Cable Set is required.

### Inbuilt Micro-Ohm Testing - Static & Dynamic

Dynamic Micro-Ohm Testing of circuit breakers is an advanced technique that provides more detailed information about its condition with a micro-ohm profile. Static measurements of contacts and joints are also possible.

Performing these types of tests require the optional inbuilt MM300 feature that provides a 300A pure and constant DC source.

### External Micro-Ohm Testing - Static & Dynamic

Dynamic Micro-Ohm Testing of circuit breakers is an advanced technique that provides more detailed information about its condition with a micro-ohm profile. Static measurements of contacts and joints are also possible.

Performing these types of tests require the combined use of the SA100 Switchgear Analyser with a pure and sustained (not falling/collapsing) DC source like Weis Micro-Ohm Meter models MM100, MM200, MM600 or MM900.

### 1st Trip & Profiling

Weis has done 1st trip on-line profiling since 1993 starting with the XBT100 and it can also be performed on any SA100 series of Breaker Tester.

### Printer

A printer housed within the case is available on request.

### Keyboard / Mouse

SA100 is operated by an external USB keyboard with built-in touchpad.

### Cable Sets

A range of standard cable sets & special made cable sets are available on request.

### Transducers

A full range of transducers and universal mounting arms are available on request.

### Transportation Cases

Robust purpose made transportation cases are available for the complete range of products and optional items.

The case for the SA100 Switchgear Analyser has the added feature rear wheels and the possibility to attach a cable case on top.

## Specifications

### INPUTS

<b>Analogue:</b>	3 x Independently controlled trip (open) and close coil current inputs. 3 x Resistive (linear or rotary) travel transducer inputs. 9 x User configurable 0 - 10V DC or 0 - 200mV DC inputs (e.g. for pressure transducers, dynamic timing), selected via input sockets. 1 x 0 - 300V DC (e.g. station battery voltage).
<b>Analogue Accuracy:</b>	Calibrated to 0.024%, $\leq \pm 0.5\%$ of reading, $\leq \pm 0.1\%$ of fullscale.
<b>Digital:</b>	24 x Contact status inputs providing timing of up to 4 main contacts and 4 resistive contacts per phase (dry contacts). 7 x User configurable inputs for 'wet' or 'dry' contact timing (24 - 250V DC or 0V DC). 1 x Dedicated trigger channel for cross-trigger with optional SA112 expansion units.
<b>Resistive Contact Range:</b>	15 - 10,000 ohms.
<b>Digital Accuracy:</b>	0.1mS / 0.05mS / 0.033mS. Optional 0.01mS*.
<b>Connectors:</b>	4mm safety socket.

### OUTPUTS

<b>Coil Operation:</b>	Solid state outputs for trip (open) and close.
<b>Coil Peak Current:</b>	5A (accuracy 2.5mA) or 30A (accuracy 15mA) AC/DC measurement ranges selectable via input sockets. Other measurement ranges possible via optional external shunt; for example 50A Peak (up to 75mS duration) or 100A Peak (up to 50mS duration).
<b>Coil Max. Voltage:</b>	400V peak.
<b>Power:</b>	24V DC general purpose (e.g. loop powered pressure transducers) supply rated for up to 200mA DC.
<b>Cross-Trigger:</b>	1 x internally wetted relay contact for cross-trigger with optional SA112 expansion units.
<b>Communication:</b>	RS232 for local communication to optional SA112 expansion units.
<b>Alarm:</b>	1 x volt-free relay contact.

### INBUILT MM300 OPTION - DYNAMIC TIMING, STATIC $\mu\Omega$ , DYNAMIC $\mu\Omega$ DCRM

<b>Battery:</b>	6 x Isolated and floating 50A DC constant current battery sources for dynamic breaker timing, static micro-ohm measurement and dynamic contact resistance measurement.
<b>Battery Accuracy:</b>	$\leq \pm 0.5\%$ per current source typical, $\leq \pm 1\%$ per current source maximum, 100ppm/°C.
<b>Batt. Drive Capability:</b>	0.0 to 0.08 ohm load at 50A.
<b>Static <math>\mu\Omega</math> Test:</b>	50A, 100A, 200A or 300A pure and constant DC source.
<b><math>\mu\Omega</math> Accuracy Typical:</b>	Analogue Accuracy + Battery Accuracy $\pm 0.5\%$ of $\mu\Omega$ reading $\pm 0.25\%$ of $\mu\Omega$ fullscale.
<b><math>\mu\Omega</math> Accuracy Max.:</b>	Analogue Accuracy + Battery Accuracy $\pm 0.5\%$ of $\mu\Omega$ reading $\pm 0.5\%$ of $\mu\Omega$ fullscale.
<b>Dynamic Timing Test:</b>	2 breaks per phase at 50A DC. 1 break per phase at 50 or 100A DC.
<b>Dynamic <math>\mu\Omega</math> Test:</b>	50A, 100A, 200A or 300A pure and constant DC source.

### RECORDING

<b>Resolution:</b>	12 bit A/D (1:4096, 0.024%).
<b>Sampling Rate:</b>	10 kHz / 20 kHz / 30 kHz selectable. Optional 100 kHz digital sample rate*.
<b>Recording Time:</b>	$\infty$ due to trigger option on all channels.
<b>Synchronisation:</b>	All inputs sampled simultaneously.
<b>Start trigger:</b>	Coil current or selectable on any analogue / digital input.
<b>1st Trip:</b>	1st trigger selectable on any channel.

### REAL-TIME CLOCK

<b>Range:</b>	Time, date, leap year and day of the year with internal battery backup.
<b>Resolution:</b>	100mSec.

### PROGRAMMING - SETTABLE PARAMETERS

<b>User strings:</b>	Site name, breaker number, breaker type, line name, operator name and up to 30 user configurable.
<b>Test times:</b>	Close, Open, Trip Free, Close-Open, Open Close, Open-Close-Open.
<b>Coil operate times:</b>	Initial delay, trip coil "on-time", close coil "on-time", delay time between closing and opening, delay time between opening and closing.
<b>Analogue channels:</b>	Input name, fullscale value, units.
<b>Digital channels:</b>	Input name.
<b>Datum points:</b>	Velocity calculation points on travel (speed) curve.
<b>Settable Parameters:</b>	A large range of settable parameters are available.

# Switchgear Analyser

# SA100

## COMPUTED RESULTS

### Detailed 3-phase information:

Peak coil current, operate times and operate time spread (main/resistive), on time, dead time, datum velocity, velocity at contact touch, stroke, contact length (main/resistive), contact separation, travel overshoot and rebound.

### Acceleration and velocity:

Graphical traces for each measured travel input with cursor measurement.

### Parallel Contact (P.I.R.) Switching Resistors:

Graphical traces for each with cursor measurement.

## GENERAL SYSTEM

12.1" TFT SVGA (800x600) "High-Bright Sunlight Readable" colour display (600cd). Removable USB Flash-Disk. SATA hard disk drive. VGA port for external screen. RS232 serial, RJ45 network and 4 x USB ports. 1GB RAM. Windows™ Operating System. All standard Windows USB printers supported. Safety keyswitch to enable/disable coil operation and constant current battery operation.

## OPERATING VOLTAGES

**Prime Power:** 100 to 370V DC, 90 to 264V AC auto-sensing via IEC power connection.  
**Burden:** <60 VA load.

## ENVIRONMENTAL

**Operating Temperature:** -20°C to +70°C (-4°F to +158°F)  
**Humidity:** 0 to 97% RH non-condensing.  
**Isolation:** 2kV rms for 1 minute (channel to channel, channel to earth).  
**Surge Withstand Transient:** To IEC 801-5. 1.2/50µS.  
Common Mode: Severity level class 4. Series Mode: Severity level class 3.  
**Fast Transient Burst:** To IEC 801-4 level 3.  
**RFI Immunity:** To IEC801-3 level 3. 10V/m 26-1000MHz.  
**Emissions:** To EN50081-1: 1992.

## MECHANICAL DETAILS

**Enclosure:** 6U steel enclosure suitable for Euro 19" wide rack mounting or free standing (tabletop).  
**Ventilation:** Fan assisted.  
**Weight:** <15kg.  
**Carry Case:** Reinforced aluminium with wheels on one end, 710mm(W) x 480mm(H) x 370mm(D).

## OPTIONAL SA112 EXPANSION UNIT (for up to 12 main/resistive breaks per phase)

**Digital Inputs:** 48 x Contact status inputs providing timing of up to an additional 8 main contacts and 8 resistive contacts per phase (dry contacts). Resistive contact range 15 - 10,000 ohms.  
15 x User configurable inputs for contact timing (24 - 250V DC).  
1 x Dedicated trigger channel for cross-trigger with SA100.  
**Outputs:** 3 x 24V DC supplies for wetting user configurable digital inputs.  
3 x Front panel diagnostic LED's (green = Ready, yellow = Connected, red = New Data).  
RS232 port for local communication with SA100.  
**Recording:** 10 kHz sampling rate, with sample record automatically aligned (via cross-trigger channels) and integrated within main record.  
**Operating Voltages:** Same as SA100 with inlet / outlet IEC power connections.  
**Environmental:** Same as SA100.  
**Mechanical Details:** 3U steel enclosure suitable for Euro 19" wide rack mounting or free standing (tabletop).  
Weight <4kg.  
Reinforced aluminium carry case, 560mm(W) x 240mm(H) x 500mm(D).

DUE TO CONTINUING DEVELOPMENT AND IMPROVEMENTS WEIS RESERVES THE RIGHT TO CHANGE THIS SPECIFICATION WITHOUT NOTICE  
Windows is a trademark for Microsoft Inc.

### HEAD OFFICE

**WEIS GMBH & Co. KG**

Kaffeestrasse 4  
28779 Bremen  
Germany  
Tel: +49 (0) 421 606040  
Fax: +49 (0) 421 607066  
Email: WeisGmbHBremen@t-online.de

### LOCAL REPRESENTATIVE



### UK OFFICE

**WEIS GMBH & Co. KG**

'Bay Trees' 47 Beltinge Road  
Herne Bay  
Kent CT6 6DA  
UK  
Tel: +44 (0) 1227 749413  
Email: sales@WeisGmbH.net